

Contents

[Introduction](#)

[The Shareware Concept](#)

[Features of IMCP](#)

[Registration and License Agreement](#)

[Installation of IMCP](#)

[Getting Started](#)

[Title Window](#)

[Main IMCP Window](#)

[Code Attributes Window](#)

[Code Generation Window](#)

[Command-line Parameters](#)

[Prosigns](#)

[Punctuation](#)

[Tips for Learning the Morse Code](#)

[History of IMCP](#)

[Glossary](#)

The Shareware Concept

Shareware distribution gives users a chance to try software before buying it. If you try a Shareware program and continue using it, you are expected to register it. Copyright laws apply to both Shareware and commercial software, and the copyright holder retains all rights with a few specific exceptions. Shareware authors are accomplished programmers just like commercial authors, and the programs are of comparable quality. (In both cases, there are good programs and bad ones!) The main difference is in the method of distribution. The author specifically grants the right to copy and distribute the software either to all and sundry or to a specific group.

Shareware is a distribution method, not a type of software. You should find software that suits your needs and pocketbook, whether its commercial or Shareware. The Shareware system makes fitting your needs easier, because you try before you buy. And because the overhead is low, prices are low also. Shareware has the ultimate money-back guarantee -- if you dont use the product, you dont pay for it!

Introduction

The International Morse Code Processor for Windows, hereafter referred to as IMCP, was designed as an instructional tool for learning the International Morse Code. Whether the student is a beginner or an advanced user, this program will be beneficial in increasing one's Morse code skills.

IMCP is capable of sending code at speeds ranging from 3 to 50 words per minute. At the slower speeds, from 3 to 10 wpm, the author has espoused the school of thought that Morse code is learned more quickly when the dot and dash duration and the time between dots and dashes are held constant, while the time duration between characters and words within that range varies inversely with the code speed. In other words, within the range of 3-10 wpm, the time required to form an individual letter or other symbol is the same regardless of the speed. The elapsed time between the letters and words, however, decreases as the speed increases.

From ten (10) to fifty (50) wpm the code attributes are defined as follows:

dot

Standard unit of time duration (1 unit of time)

dash

Duration of three dots (3 units of time)

spaces between dots/dashes

Duration of one dot (1 unit of time)

space between characters

Duration of three dots (3 units of time)

space between words

Duration of seven dots (7 units of time)

The code attributes from 3 to 9 wpm are the same as for 10 wpm except for the spacing between characters and words.

Features of IMCP

- IMCP can send code at speeds ranging from 3 to 50 words per minute
- **Code attributes** can be modified and saved as a file for later retrieval. If the user names one of the code attribute files "IMCPW.DEF", it will be automatically loaded into IMCP when it is first executed.
- Text is randomly generated as 100 lines of 5-character "words" consisting of letters, numbers, and punctuation in any combination.
- The user can also create in IMCP's editor up to 300 lines of custom-made text for translation into code. The maximum length for each line of text is 100 characters.
- **Prosigns** can be included in the custom-made text or the randomly generated text.
- The text can be saved to disk as a **text file** for later retrieval. Text files not created by IMCP can also be read by the program.
- Code can also be sent directly from the keyboard.
- The user has the option of selecting only the code characters and prosigns required for the amateur radio FCC code exam or the complete set of characters and prosigns as listed in the ARRL Handbook.

Prosigns

In Morse Code, a prosign, or "procedure signal", is a special one or two-letter (sometimes 3-letter) instruction. If the prosign consists of more than one letter, there is no pause between the letters as they are being transmitted. For example, the prosign AR which is described below, has the sound didahdidahdit." IMCPC generates either the complete list of prosigns or the abbreviated list that is required for the radio amateur FCC exam.

To distinguish the prosign from the rest of the text, each two-letter prosign will be enclosed by the "less than" (<) and the "greater than" (>) symbols when they appear in the randomly generated text. A typical line of text containing letters, numbers, and prosigns appears below:

4C4GN GU8CQ F<BT> CN3OF T6PKB MGNK1 <SK>A 6KVII 5DMZK

The complete list of prosigns contained within IMCPC follows:

<DN> <AR> <SK> <BT> <CL> <KN> <AS> <SN> <KA> <AL>

A list of the required prosigns for the amateur radio FCC code test is shown below:

<DN> <AR> <SK> <BT>

Common Prosigns Used in Amateur Radio

AR Means "end of transmission." It is used when first calling a station with whom contact has not been established. The code is the same as the end-of-message symbol or cross (+).

Example: VE3XYZ VE3XYZ VE3XYZ DE WA4ISZ WA4ISZ WA4ISZ AR

K Means "go ahead." Used at the end of each transmission. It is not used when answering a CQ or calling a station with whom contact has not been established.

Example: What is the weather like, Bill?
VE3XYZ DE WA4ISZ K

SK This prosign is sent at the end of the very last transmission. It is equivalent to the word "clear" in voice transmissions.

Example: 73, Bill. Enjoyed our QSO.
SK VE3XYZ DE WA4ISZ

BT Used as a "thought separator." Used as general-purpose punctuation. The code is the same as for the double dash (=).

Example: Thanks for the call BT Name is Bill BT UR RST is 599 BT ...

CL Means that the radio operator is closing down the station and will not be listening for other calls.

Example: 73, Bill. Enjoyed our QSO. Have to go to
supper now. Will be back in about an hour.
SK VE3XYZ DE WA4ISZ CL

KN Used when other stations are not being invited to join a QSO.

Example: How was your trip, Bill?
VE3XYZ DE WA4ISZ KN

AS Means "wait" or "stand by."

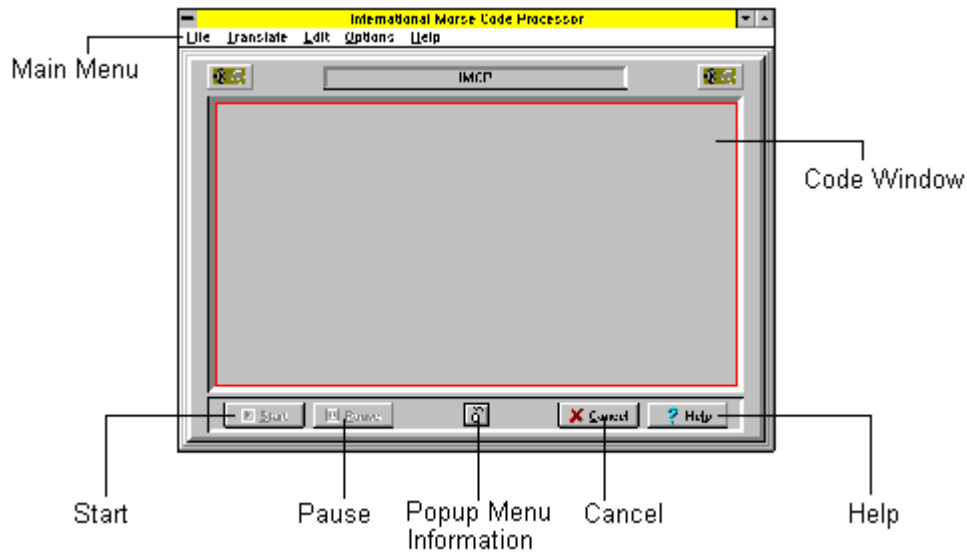
DN Fraction bar (/)

Below are the meanings of other prosigns:

KA Starting signal

SN Understood

Main IMCP Window



Main Menu



Description of Main Menu Selections

[File](#)
[Translate](#)
[Edit](#)
[Options](#)
[Help](#)

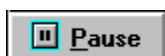
An alternate, [popup menu](#) is also available. It has the same selections as the main menu.

Main IMCP Window Buttons

The following buttons are located on the main IMCP form:



Starts the translation of text to code after the Pause button has been clicked.



Pauses the translation of text to code until the Start button has been clicked.



Displays information on using the [popup menu](#).



Cancels the translation of text to code. Also cancels the edit mode.



Clicking this button or pressing F1 displays this help screen.

Glossary

[code attributes](#)

[code window](#)

[command-line parameter](#)

[default values](#)

[font](#)

[good fist](#)

[OS shell](#)

[path](#)

[popup menu](#)

[prosign](#)

[scroll bars](#)

[text file](#)

[word wrap](#)

Tips for Learning the Morse Code

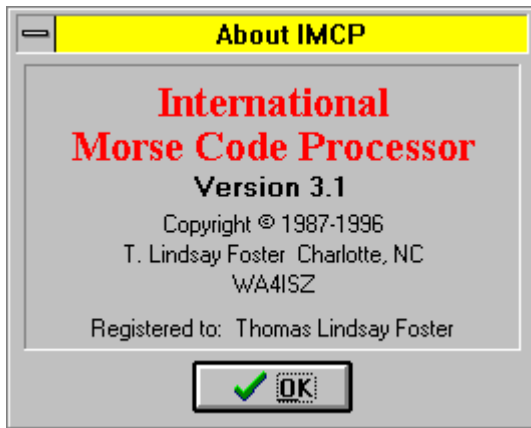
- Do not memorize the dots and dashes of each code character. Instead, learn the code by sound. In everyday life we instantly recognize certain rhythmic sounds at any speed. Say the phrase, "shave and a hair cut two bits." Most people will recognize the tapping of that rhythm on a desk top without our saying the words. Each code character should be learned in a similar fashion. In fact, it's better that we don't even think of a character as consisting of DOTS and DASHES. For example, rather than thinking of an "A" as consisting of a DOT and DASH, think of it as DIT DAH. The "T" in DIT is silent unless it is in a DIT at the end of a character, such as a "B" which is DAH DIT DIT DIT. Only the "T" in the last DIT is pronounced.
- Find a quiet place to concentrate on the sounds of the code. Don't study any longer than 30-45 minutes at a time.
- Write down on paper each character as you hear it. As your skill of copying improves, try to lag behind a couple of characters as you listen to the code. Eventually, you'll be able to "copy behind" by several words.
- Don't try to learn all of the characters at one time. Instead, choose several characters with similar characteristics. For example, you might wish to begin studying the sounds of the characters E, I, S, H, and 5. When you feel comfortable with those characters, add several more. Continue adding characters until you have included all of the required list.
- Take your time. Don't feel pressured to learn the code by a certain time. Try to relax. Don't feel frustrated if you miss some of the characters from time to time. As you continue practicing, you'll be able to recognize the sounds more quickly, and, thus, increase your code speed.
- Learning to send code is easy, but learning to send code WELL takes lots of practice. Although IMCP does not provide a means for practicing code with a telegraph key, developing a "**good fist**" is essential. Code practice oscillators can be bought for a few dollars. Buy one or borrow one from a friend. Listen to the sound as you send the code. Compare your code with the code generated by this program. Seldom is it a pleasure to communicate with someone who sends code poorly!

[Help | Contents](#)

Choosing **Contents** displays a Table of Contents on Help.

Help | About

Select **About** to display the About window as shown below. This window provides information about the program, such as version and copyright data.



Notice that information on the registered user is also listed at the bottom of the window. If the program is not registered, the information is listed as

Registered to: Unregistered evaluation copy

Translate | Text

Choosing **Text** translates the text to Morse code. Click the Pause button to temporarily suspend translation. To resume the translation, click the Start button. Press the Cancel button to abort the operation.

Options | Main Menu Off

Main Menu Off hides the main menu so that only the Code Window and its controls are visible. This selection functions like a switch. Click once to turn the main menu off, and click again to turn the main menu back on.

See also

[popup menu](#)

Options | Code Window

This selection allows the user to change the characteristics of the [code window](#). When selected, the following submenu is displayed:

- **Fonts** Changes the [font](#) of the code window text
- **Colors** Changes the color of the code window background.
- **Scroll Bars** Switches on or off the [scroll bars](#) of the code window
- **Word Wrap** Switches on or off the [word wrap](#) feature of the code window

See also

[Large Fonts and Word Wrap](#)

[Changing to and from the Terminal Font](#)

Options

Selecting **Options** displays the following submenu:

[Code Attributes](#)
[Code Generation](#)
[Code Window](#)
[Main Menu Off](#)
[Load Options](#)
[Save Options](#)

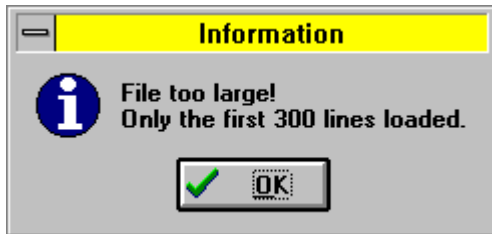
File | Save

Select **Save** to store on disk the text created in IMCP. Until the user changes the [text file](#) name, its default name is "UNTITLED."

File | Open

Select **Open** to load a **text file** into IMCP for translating into Morse code or for editing. If text has been modified in IMCP, the program will ask the user if the text needs to be saved before loading in another file.

IMCP's editor accepts a maximum of 300 lines of text with a maximum line length of 100 characters. If IMCP opens a file which is in excess of 300 lines, the following message is displayed:

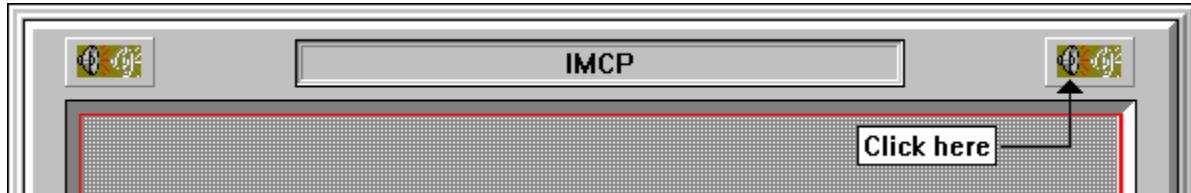


A line of text which exceeds 100 characters will simply be truncated to 100 characters without any message to that effect.

Entering the Registration Code

After you register your program through NorthStar Solutions, you will be given a registration code to enter into IMCP. This code entry is accomplished as follows:

- When IMCP's main window is displayed, you will see two speaker graphics at the top (See example below) . Moving the mouse cursor over the right speaker graphic displays the hint, **Click on this graphic to enter registration code.**
- Click on the right speaker graphic and follow the instructions. You will be prompted to enter the registration code, your name, city, state, and amateur radio call letters, if applicable.



Registration and License Agreement

See also

[Entering the Registration Code](#)

Users of INTERNATIONAL MORSE CODE PROCESSOR, hereafter referred to as IMCP, must accept this disclaimer of warranty:

"IMCP IS SUPPLIED AS IS. THE AUTHOR DISCLAIMS ALL WARRANTIES, EXPRESSED OR IMPLIED, INCLUDING, WITHOUT LIMITATION, THE WARRANTIES OF MERCHANTABILITY AND OF FITNESS FOR ANY PURPOSE. THE AUTHOR ASSUMES NO LIABILITY FOR DAMAGES, DIRECT OR CONSEQUENTIAL, WHICH MAY RESULT FROM THE USE OF IMCP."

IMCP, is a "shareware program" and is provided at no charge to the user for evaluation. If, after 30 days, you find this program to be useful, then you are required to register it. This registration will license one copy for use on any one computer at any one time. You must treat this software just like a book. An example is that this software may be used by any number of people and may be freely moved from one computer location to another, so long as there is no possibility of it being used at one location while it's being used at another, just as a book cannot be read by two different persons at the same time.

The registration fee is \$19.95 for a single copy. For additional copies the registration fee is as follows:

1-5 copies \$19.95 per copy
6 or more copies \$14.95 per copy

The registration information follows:

=====

For technical support or comments about this program, please contact me at:

Internet: tfoster@ix.netcom.com

For your convenience we have contracted NorthStar Solutions to process any orders that you wish to place with your valid Visa or MasterCard. They may be contacted **for orders only** via any of the following methods:

Voice: **1-800-699-6395** (10:00 a.m. - 10:00 p.m., Eastern Standard Time. Calls from the U.S. only.)

1-803-699-6395 (10:00 a.m. - 10:00 p.m., Eastern Standard Time.)

Fax: **1-803-699-5465** (Available 24 hours. International and business orders encouraged.)

E-Mail: **America Online: STARMAIL** **CompuServe: 71561,2751** **Internet:**
STARMAIL@AOL.COM

Regardless of how you register, please have the following information ready:

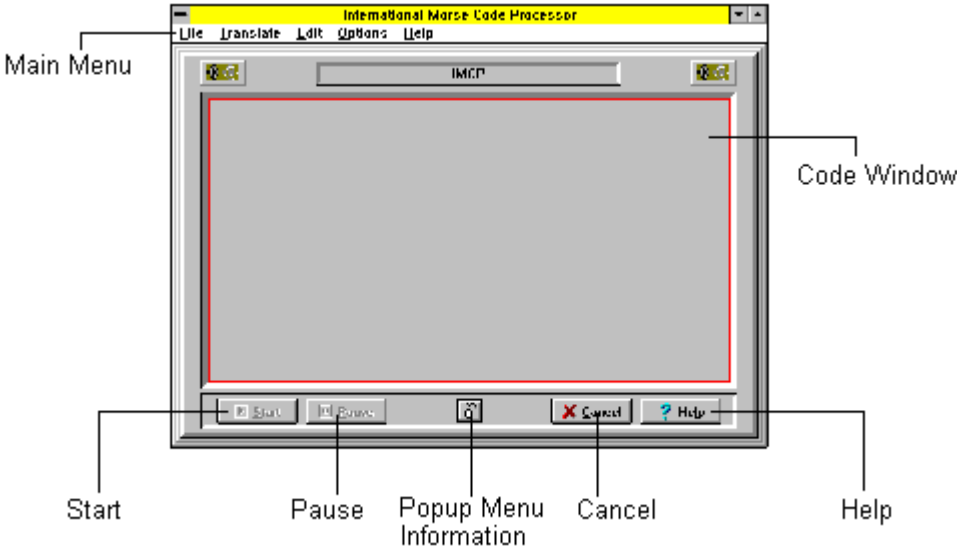
The program and version number ([NAME] version [x.x]) you are registering. Your Visa or MasterCard # and its expiration date. Your E-MAIL or Mailing address (so that the registration code and an E-Mail confirming your order can be sent, and I (the author) can contact you easily with any important follow-up information.).

IMPORTANT: 1) NorthStar processes registrations only. Please contact the author for any product/technical support. 2) E-mailed and Faxed registrations are encouraged, but all registrations are very much appreciated!

=====

Getting Started

After IMCP has been properly installed, it is executed by clicking on the program's icon. Following the [title window](#), the main IMCP window is displayed as shown:



See also [Main IMCP Window](#)

Punctuation

IMCP provides a complete list of punctuation and an abbreviated list that is required for the radio amateur FCC exam. The abbreviated list is as follows:

. , ? / =

The fraction bar (/) is also generated as the prosign <DN>, and the double dash (=) is also generated as the prosign <BT>.

The complete list of punctuation is listed below:

Symbol	Code	Meaning
.	. _ . _ . _	Period
,	_ _ . _ _	Comma
?	. _ _ _ . .	Question mark
=	_ _	Double dash
/	_ . . _ .	Slash
-	_ _	Hyphen or dash
(_ . _ _ .	Left parenthesis. Orr's Radio Handbook uses the right parenthesis code for both the left and right parentheses.
)	_ . _ _ . _	Right parenthesis
\$. . . _ . _	Dollar sign
'	. _ _ _ _ .	Apostrophe
¶	. _ . _ . .	Paragraph. Also implemented as prosign <AL>.
_	. . _ _ . _	Underline
+	. _ . _ .	End of message or cross. Also implemented as prosign <AR>.

Command-line Parameters

The following **command-line parameters** (also called command-line arguments) can be typed after the name of the program:

IMCPW **filename.ext**

IMCPW filename.ext **/s:nn**

IMCPW filename.ext /s:nn **/t:nnnn**

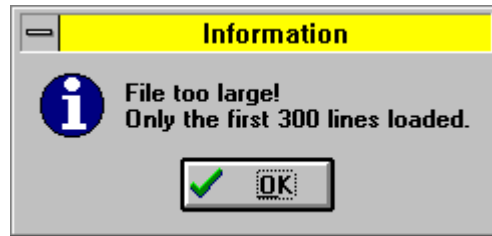
IMCPW filename.ext /s:nn /t:nnnn **/n**

IMCPW **/h**

filename.ext The file to be read must be a **text file**. The complete **path** can be listed with the filename. The example below lists a file called **lesson1.txt**.

Example: **IMCPW lesson1.txt**

IMCP can read a maximum of 300 lines of text. The following message is displayed when the file exceeds 300 lines:



When the filename is the only parameter, the **code attributes** will be the program's **default values** unless an options file called IMCPW.DEF exists, in which case the attributes are read from the options file.

/S:nn The "S" stands for the code speed and the "nn" refers to the actual speed in words per minute. The allowable range is 3-50 wpm. This parameter must be used with the filename parameter. The /S parameter will override the program's default speed or the speed listed in the default options file, IMCPW.DEF.

Example: **IMCPW lesson1.txt /s:15**

In the example above, "lesson1.txt" will be sent in code at 15 wpm.

/T:nnnn The "T" stands for the tone (frequency) of the code and the "nnnn" refers to the actual frequency in Hertz. The allowable range is 100-1000Hz. This parameter must be used with the filename parameter.

Example: **IMCPW lesson1.txt /t:550**

In the example above, "lesson1.txt" will be sent at a tone of 550 Hz. The /T parameter will override the program's default tone or the tone listed in the default options file, IMCPW.DEF.

/N The "N" stands for no pause for extra spaces or for characters not recognized in the International Morse Code. This parameter must be used with the filename

parameter. This parameter might be used when the file to be read was created in another program, such as a word processor, and contains borders and other special characters.

Example: **IMCPW lesson1.txt /n**

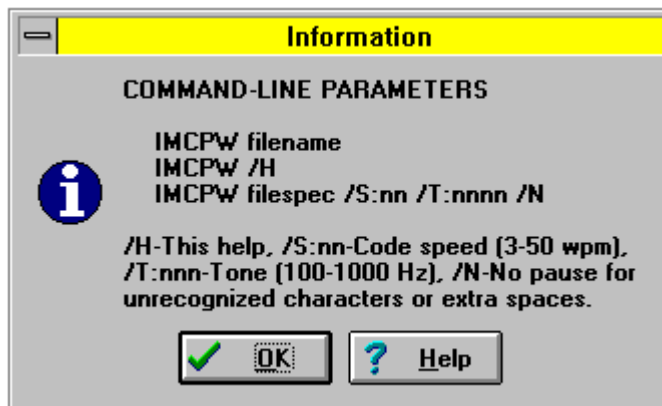
The /N parameter will override the program's default value or the value listed in the default options file, IMCPW.DEF.

/H

The "H" stands for help on command-line parameters. This parameter must be used as the only parameter. When this parameter is listed, a help dialog box is displayed at the beginning of IMCP's execution to provide help on command-line parameters.

Example: **IMCPW /h**

The help dialog box is shown below:



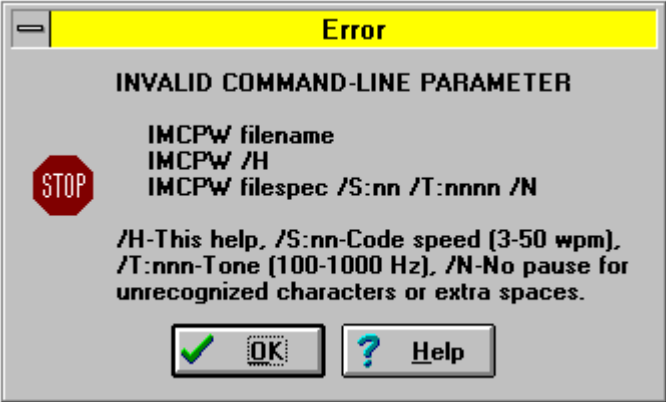
One way to use command-line parameters with IMCP is to execute it from the File Manager. First select IMCPW.EXE by highlighting it. Next select File from File Manager's Menu, and then select Run. The name IMCPW.EXE is then displayed in the Run Dialog Box. Move the cursor to the end of the program name, type one or more parameters, and then press Enter or select OK. This is the most convenient method when the user will be changing parameters frequently.

A second method is to use command-line parameters through the program's icon. First highlight the IMCP's icon, and then select File from the Program Manager's menu. From the File submenu, select Properties. The Program Item Properties dialog box is then displayed. Add the parameter to the end of Command Line information. Finish by pressing Enter or by selecting the OK button. The parameter listed will continue to be read by IMCP until it is removed or replaced by another parameter.

A third way to implement command-line parameters is to select File from the Program Manager's menu. From the File submenu, select Run. Selecting Run displays the Run Dialog Box. Enter the appropriate information and then press Enter or select the OK button. The example below, which assumes that IMCP is residing in the Code subdirectory on the C drive, implements the code speed parameter:

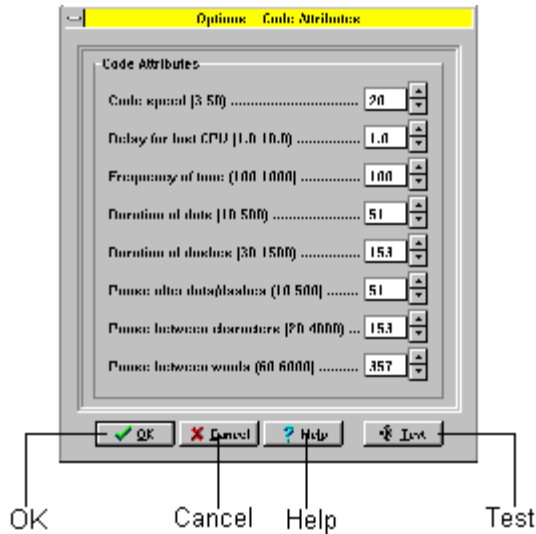
```
c:\code\imcpw /s:18
```

If invalid command-line parameters are given, the following dialog box is displayed:



Code Attributes Window

Selecting **Options | Code Attributes** displays the Code Attributes window. This window is used to change the characteristics of the code. Selecting a code speed automatically updates the other code attributes. Adjusting the other attributes of the code will also update the code speed.



Description of Code Attributes

Code speed

Code speeds of 3 to 50 words per minute can be selected.

Delay for fast CPU

This feature allows an extra delay in the code translation if the computer processes the code too quickly. This delay does not change the code attributes that are listed in the Code Attributes Window.

Frequency of tone

A frequency of from 100 to 1000 hertz (cycles) can be selected.

Duration of dots

Duration of dots is in milliseconds. The allowed range is from 10 - 500 milliseconds.

Duration of dashes

Duration of dashes is in milliseconds. The allowed range is from 30 - 1500 milliseconds.

Pause after dots/dashes

Pause duration is in milliseconds. The allowed range is 10 - 500 milliseconds.

Pause between characters

Pause duration is in milliseconds. The allowed range is 20 - 4000 milliseconds.

Pause between words

Pause duration is in milliseconds. The allowed range is 60 - 6000 milliseconds.

Code Attributes Window Buttons



Accepts new code attribute selections and returns the user to the IMCP main window.



Cancels the users selections and returns the user to the IMCP main window.



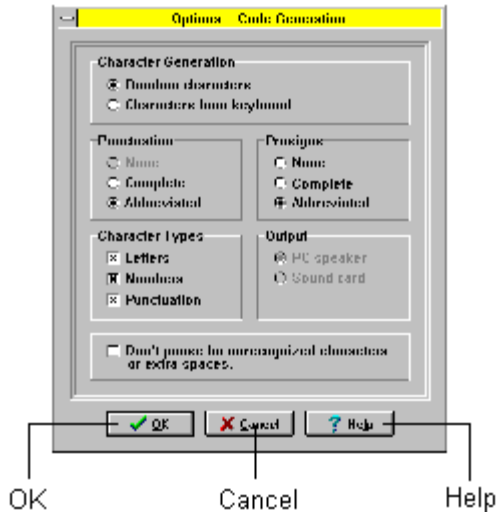
Selects this help screen by clicking on this button or by pressing F1.



Updates any new selections and sends the string "ABC DEF" in code.

Code Generation Window

Selecting **Options | Code Generation** displays the Code Generation window. This window is used to select the manner in which the code characters are to be generated and also the type of code characters that are to be generated.



Character Generation

Random characters

One hundred lines of code are randomly generated. Each line of code is comprised of 5-character "words."

Characters from keyboard

Characters are typed from the keyboard by the user.

Punctuation

None

This option is automatically checked until punctuation is selected by the user at which time this selection is unchecked and disabled.

Complete

If punctuation is selected, this option generates the complete set of punctuation as listed in the ARRL Handbook. This option is disabled until the punctuation check box is selected.

Abbreviated

If punctuation is selected, this option generates the punctuation required by the amateur radio FCC exam. This option is disabled until the punctuation check box is selected.

Prosigns

None

No prosigns will be randomly generated when this option is checked.

Complete

This option generates the complete set of prosigns as listed in the ARRL Handbook.

Abbreviated

Generates the prosigns required by the amateur radio FCC exam.

Character Types

Letters

This option selects letters to be randomly generated.

Numbers

Selects numbers to be randomly generated.

Punctuation

This option selects punctuation to be randomly generated.

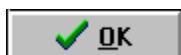
Output

Since this version of IMCP provides output to the PC speaker only, the PC speaker and sound card options are disabled.

Don't pause for unrecognized characters or extra spaces

This check box is selected if the text to be read has a lot of extra spaces between words or sections, or there are many characters which have no Morse code equivalents. Checking this feature instructs IMCP to quickly by-pass the extra characters.

Code Generation Window Buttons



Accepts the user's selections and returns the user to IMCP's main window



Cancels the user's selections and returns the user to IMCP's main window



Clicking this button or pressing F1 accesses this help facility.

File

Selecting **File** displays the following submenu:

New

Open

Save

Save As

Print

Print Setup

OS Shell

Exit

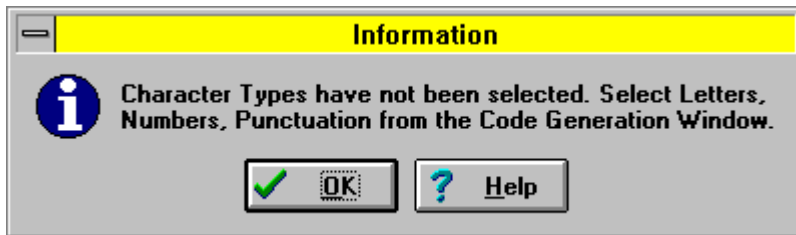
File | New

Selecting **New** allows the user to create new text. IMCP provides two methods for creating text for code:

- Text can be randomly generated as 100 lines of 5-character "words."
- Up to 300 lines of text with a maximum of 100 characters per line can be created by typing characters from the keyboard.

The user selects the manner in which the text is created by choosing from the main menu [Options | Code Generation](#).

Selecting **New** when a character type has not been selected from the [Code Generation Window](#), causes the following dialog box to be displayed:



See also [Edit](#)

File | Save As

Selecting **Save As** allows the user to save the text under a new file name.

File | Print

Choosing **Print** prints the text that was created in IMCP. This selection also can be used to change the printer setup.

See also

[File | Print Setup](#).

File | Print Setup

Select **Print Setup** to change the settings of the printer or to change the type of printer to be used. Print Setup can also be accessed through **File | Print**.

File | OS Shell

Choosing **OS Shell** permits the user to "shell out to DOS" to perform DOS-related operations. When the user shells out to the operating system, IMCP remains intact in the memory of the computer. To return to IMCP, the user types the word **EXIT** and then presses the Enter key.

File | Exit

Select **Exit** to quit the program. The user will be prompted to save the text if it has not been saved.

Translate

Selecting **Translate** displays the following submenu:

Text

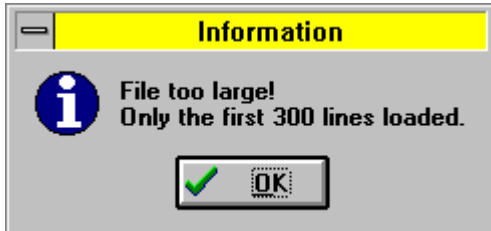
Keyboard

Translate | Keyboard

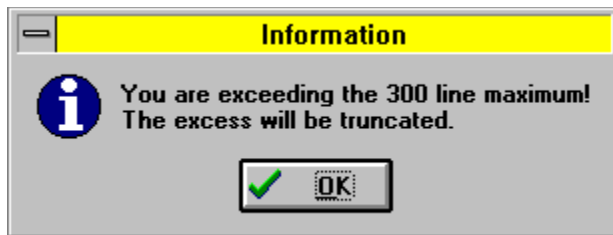
Select **Keyboard** to translate a character as soon as it is typed. This feature is more applicable to the student who is new to the Morse code.

Edit

Choosing **Edit** allows the user to create up to 300 lines of new text or to make changes to the text which is currently residing in the program. The user may also load into the editor a **text file** which was not created by IMCP, although larger files will be truncated to 300 lines of text. The maximum number of characters per line is 100 characters. The following message is displayed when the file exceeds 300 lines of text:



Attempting to enter text which exceeds line 300 causes the message below to be displayed:



To create a new text file from the keyboard when IMCP is first executed, select **Edit** from the main menu. The new text is then typed.

If the editor needs to be cleared before typing new text, the user will need to follow these steps:

- Select **Options** from the main menu.
- Select **Code Generation** from the options submenu.
- From the Code Generation window, select from the Code Generation section, "Characters from keyboard."
- Return to the **main IMCP window** and from the **File** selection of the main menu select **New**.

The user can use the commands below to copy, cut, and paste text in the IMCP editor. The text to be copied or cut is first selected (highlighted) by using the mouse. The commands are recognized in Windows editors and word processors.

Command

Ctrl-C

Ctrl-X

Ctrl-V

Description

Copies the block of text into the clipboard.

Cuts the block of text from the editor and places it into the clipboard.

Pastes the text from the clipboard into the editor.

Options | Code Attributes

Choose **Code Attributes** to change the characteristics of the code.

See also

[code attributes](#)

[Code Attributes Window](#).

Options | Code Generation

Choose **Code Generation** to select whether the code is to be randomly generated or created from the keyboard. The type of code characters to be randomly generated can also be selected.

See also

[Code Generation Window](#).

Options | Load Options

Select **Load Options** to load an options file which was previously saved. This file contains all of the following options:

[code attributes](#)
[code generation](#)
[code window](#)
[main menu off](#)

This option might be used when several people are using IMCP, and each individual wishes to tailor the code and the code window to his individual taste. Therefore, each person saves the options selected under a different filename. An example of a filename follows:

CODE15.TLF <-- Name might indicate that the program is to be set at 15 words per minute for an individual whose initials are TLF.

The default name for the options file is IMCPW.DEF. If this name is used, IMCP will automatically read it on start-up.

See also

[Options | Save Options.](#)

Options | Save Options

Select **Save Options** to save the options chosen as a file. This feature allows the user to modify the program, save the modifications, and later retrieve them through the **Load Options** menu selection. If the options file is named IMCPW.DEF, the program will automatically load the file each time it is executed.

This option might be used when several people are using IMCP, and each individual wishes to tailor the code to his individual taste. Therefore, each person saves the options selected under a different filename. An example of a filename follows:

CODE15.TLF <-- Name might indicate that the program is to be set at 15 words per minute for an individual whose initials are TLF.

See also

[Options | Load Options.](#)

Help

Selecting **Help** displays the following submenu:

[Contents](#)
[About](#)

Installation of IMCP

The International Morse Code Processor is sent via e-mail in the form of a compressed file called IMCPW.ZIP. If IMCP is mailed to you through first-class mail, the program will come on diskette as a collection of uncompressed files.

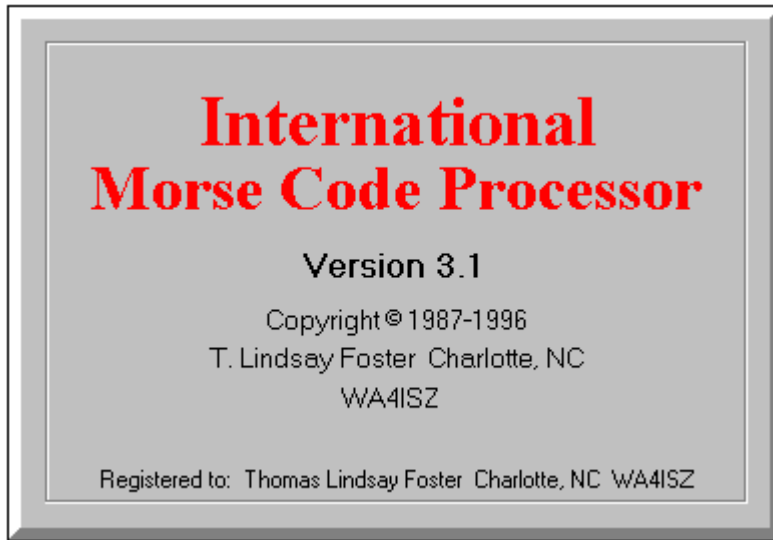
Below is a list of the uncompressed files that comprise IMCP:

IMCPW.EXE	The main program
IMCPW.HLP	The help facility
README.WRI	Contains the license agreement, registration information, and the installation instructions
FILE_ID.DIZ	File containing a brief description of the program
HITIME1.VBX	File required by IMCPW.EXE
BIVBX11.DLL	File required by IMCPW.EXE
EARTH.ICO	Icon file needed for the Program Group

IMCP has no special setup or configuration. If you are familiar with Windows, simply unzip the IMCPW.ZIP file (if it is not already unzipped), copy the files into a subdirectory of your choice, except for the files HITIME1.VBX and BIVBX11.DLL, which should be copied into the WINDOWS\SYSTEM subdirectory, and set up a Program Group, or simply add the IMCP icon (earth.ico) to an existing Program Group. That is all there is to it.

Title Window

This window is displayed each time IMCP is started. The title window remains on the screen for about 8 seconds or until the user clicks the mouse on the window.



The title window does not display when a **command-line parameter** is used. Notice that information on the registered user is listed at the bottom of the window. If the user has not registered the program, the information is listed as

Registered to: Unregistered evaluation copy

History of IMCP

The International Morse Code Processor has been in existence since 1987 as a DOS-based program. Version 2.1 of IMCP can be downloaded as freeware from the Hamnet forum on CompuServe. This version of the program has most of the features of the present Windows version 3.1.

The DOS versions of IMCP were written in Borland International's Turbo Pascal. IMCP version 3.0 and 3.1 were written in Borland Internationals Delphi. Version 3.1 is identical to version 3.0 with the following exceptions:

- Some minor bugs were removed.
- Scroll bar components were replaced with spin buttons in the Code Attributes window.
- In the Code Attributes window an error message is displayed when the user enters an invalid attribute and then clicks on either the OK button or the Test button.
- Some enhancements were made to this Help facility.

command-line parameter

A filename or special instruction placed after the name of the program which the program reads on start-up.

prosign

The "procedure signal" is a special one or two-letter (sometimes 3-letter) instruction. If the prosign consists of more than one letter, there is no pause between the letters as they are being transmitted.

text file

Also called a DOS file or ASCII file, this file is of a format which can be read by most editors or word processors. The file's contents can also be displayed by using DOS's TYPE command.

code window

Window in which characters are displayed as they are translated into Morse code.

code attributes

The characteristics of the code which are

- code speed
- tone of dot and dash
- duration of dot
- duration of dash
- pause between dots and dashes
- pause between characters
- pause between words

OS Shell

Returning to the operating system while leaving the current program intact in memory. In Windows 3.1, the user will be returned to the DOS system prompt. This allows the user to perform DOS operations, such as formatting a disk, copying or deleting files, etc. To return to IMCP from the DOS prompt, the user types the word EXIT and presses the Enter key.

path

The drive letter and any required subdirectory used to "trace a trail" for the computer to follow in order to find the file stored on the disk. In the example below, IMCP is instructed to find the file **LESSON1.TXT** on the **C** drive in the subdirectory called **PRACTICE**:

IMCPW C:\PRACTICE\LESSON1.TXT

default values

Values which are stored in IMCP and used by the program unless they are changed by the user. For example, the default code speed of IMCP is 20 words per minute. This will be the code speed of IMCP until the user changes it.

good fist

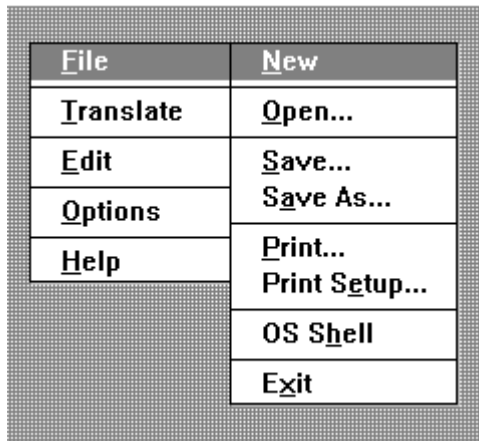
Code lingo for a person who has the skills to send code well. The code sender has developed a good ear for the sound of the code as well as good hand coordination. Each dot and dash are perfectly formed with the correct spacing between dots, dashes, characters, and words.

main menu off

Hides the main menu so that only the Code window and its controls are visible. The [popup menu](#) is still available.

popup menu

In addition to the main menu, there is a alternate menu which pops up when the right mouse button is clicked. This popup menu has the same selections as the main menu.



<u>F</u> ile	<u>N</u> ew
<u>T</u> ranslate	<u>O</u> pen...
<u>E</u> dit	<u>S</u> ave...
<u>O</u> ptions	<u>S</u> ave As...
<u>H</u> elp	<u>P</u> rint...
	<u>P</u> rint <u>S</u> etup...
	OS <u>S</u> hell
	<u>E</u> xit

scroll bars

The scroll bars allow the user to use the mouse to move around in the text. This selection acts like a switch. Selecting Scroll Bars once turns scroll bars on. Selecting Scroll Bars again, switches the scroll bars off.

If **word wrap** is activated before selecting Scroll Bars, selecting Scroll Bars will turn off word wrap and activate both the vertical and horizontal scroll bars. However, if word wrap is turned on after Scroll Bars is selected, only the vertical scroll bar will be displayed.

word wrap

The process in which words which would extend beyond the right margin are moved to the beginning of the next line.

This selection acts like a switch. When first selected, word wrap is turned on. Selecting Word Wrap again turns off word wrap.

Also see

[scroll bars](#).

font

The style of the character, its size, whether it is regular, bold, underlined, or italicized, and its color.

Save As

Permits the user to name the code file to be saved regardless of whether it has been previously named or not.

Changing to and from the Terminal Font

As a "Terminal" font, the paragraph symbol (¶) has a decimal ASCII value of 20. However, for most of the other fonts, the ASCII value is 182. Therefore, if the complete set of punctuation characters is to be generated by IMCP, and the user decides to switch fonts from, say "Courier" to "Terminal" or from "Terminal" to "Courier", there needs to be a translation from the character of ASCII 182 to 20 or from 20 to 182. This is done automatically by the program. The following dialog box is displayed when this translation is to take place:



Large Fonts and Word Wrap

Since IMCP limits the maximum number of lines of text at 300, it's possible that turning on word wrap with large fonts selected could cause each line of text to be broken up into several lines, thus exceeding the 300 lines which IMCP imposes. To prevent this from happening, IMCP turns off word wrap and displays the following dialog box:

